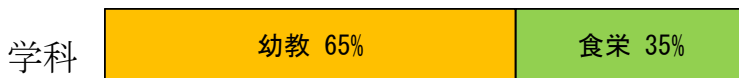
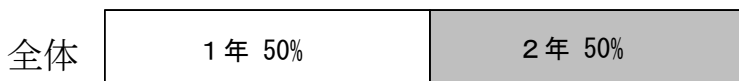


令和元年度学生生活に関するアンケート 集計結果

		男	女	未記入	合計	
1年生	幼児教育学科	2	37	4	43	67
	食物栄養学科	2	19	3	24	
2年生	幼児教育学科	5	39	0	44	67
	食物栄養学科	2	20	1	23	
合計		11	115	8	134	134

※全学年全学科を対象として行った。

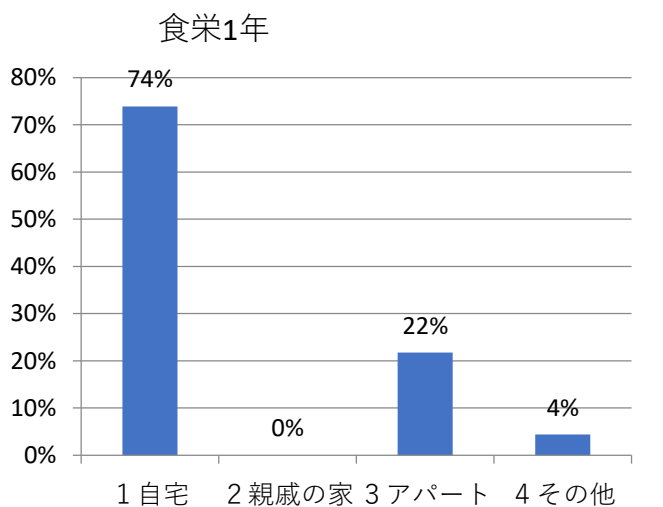
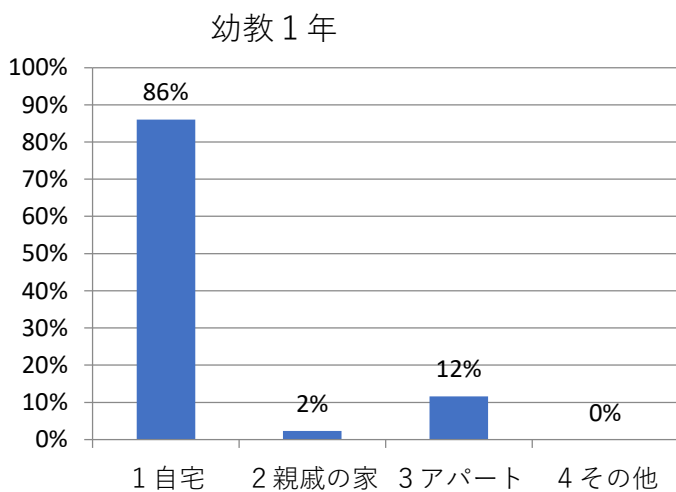
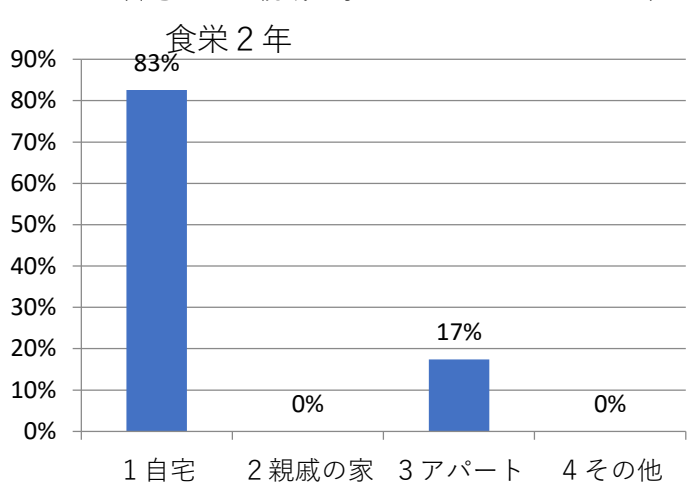
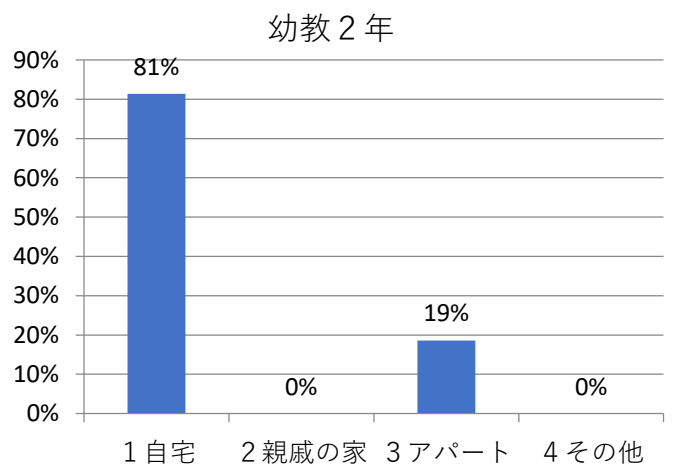
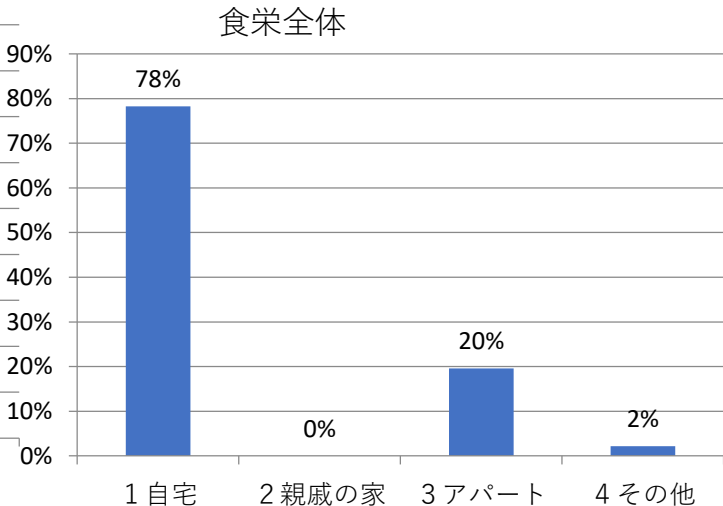
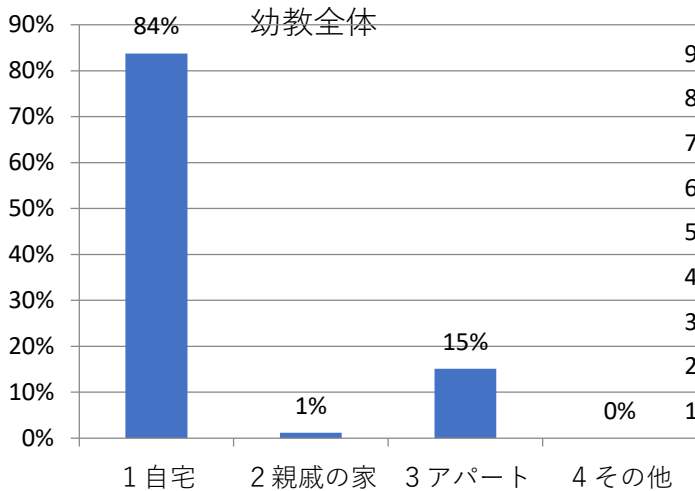
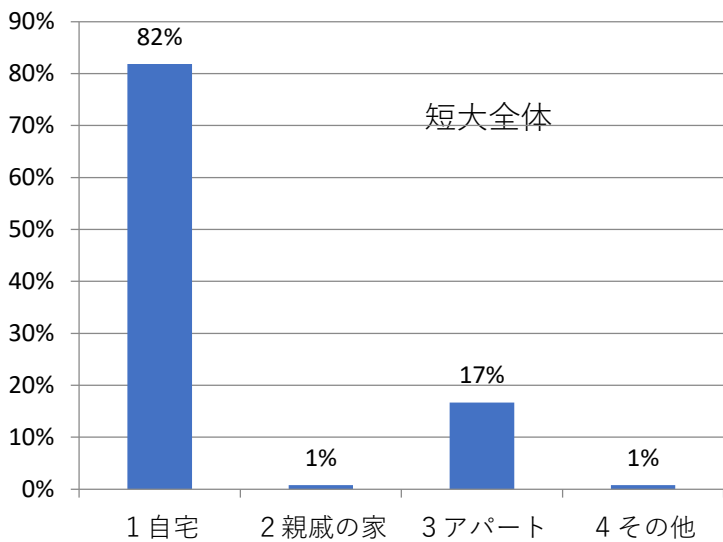
回答率 94%



※その他の回答のコメント内容については
share▶A共有▶A6各種委員会▶学生委員会
▶令和元年学生生活アンケート▶自由記述.xlsx
をご参照ください

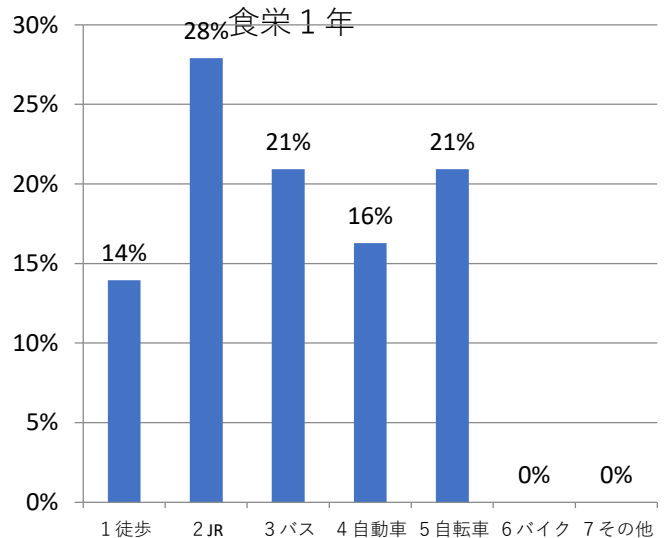
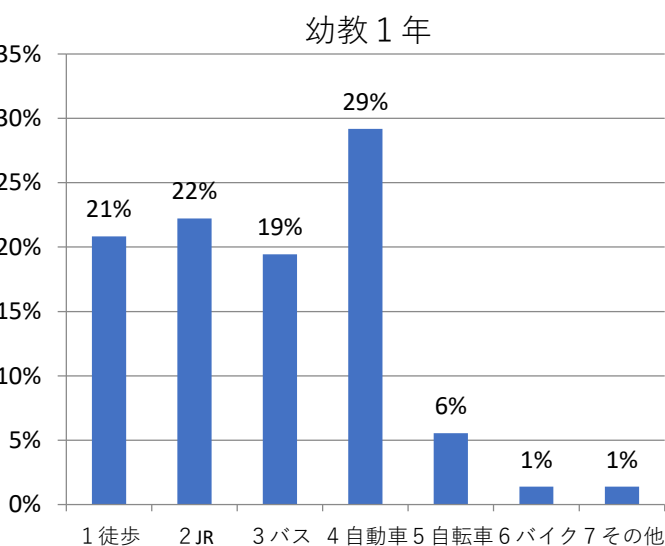
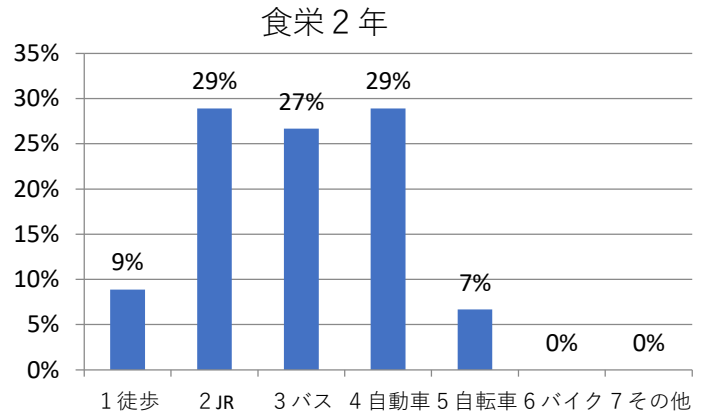
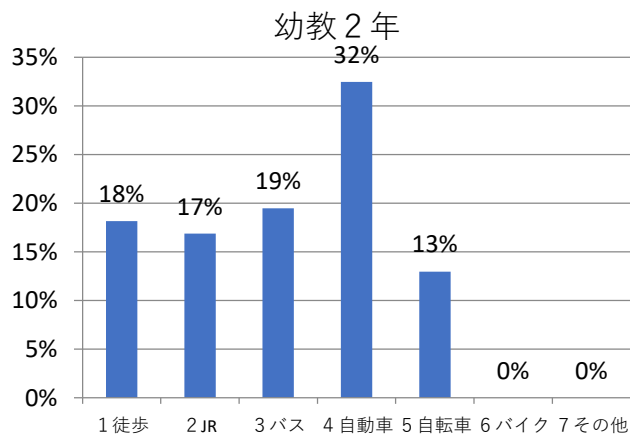
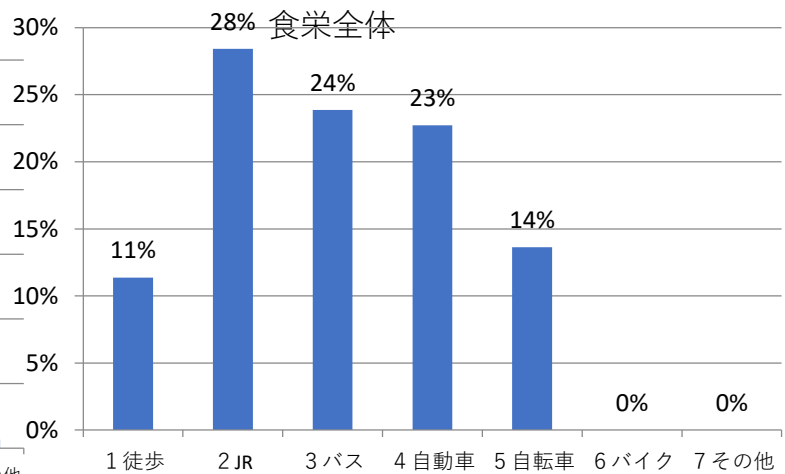
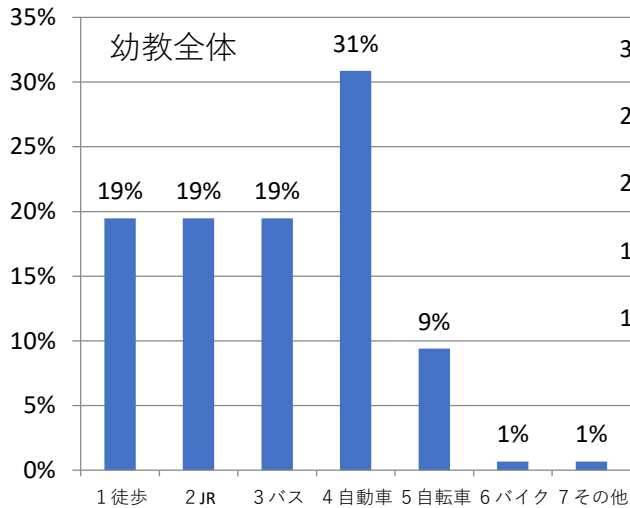
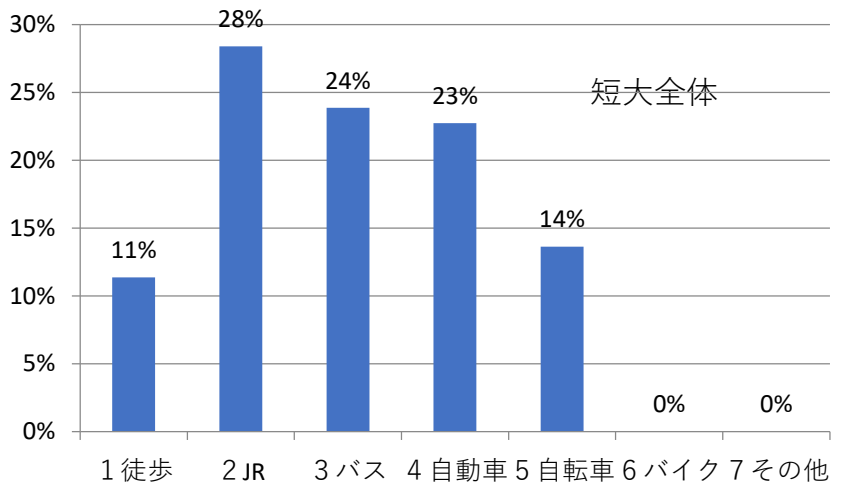
質問1 短大へはどこから通っていますか？

- 1 自宅
- 2 親戚の家
- 3 アパート等（一人暮らし）
- 4 その他



質問2 通学手段は？

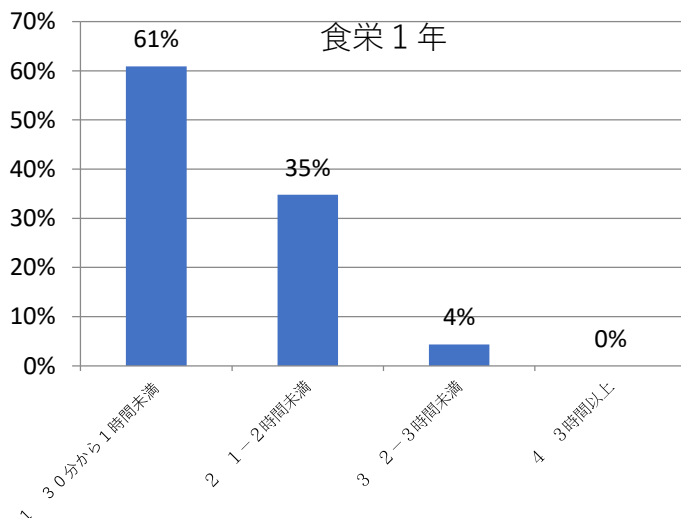
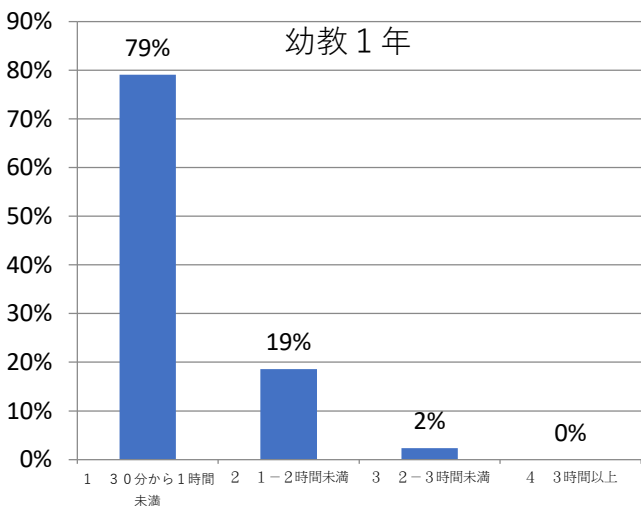
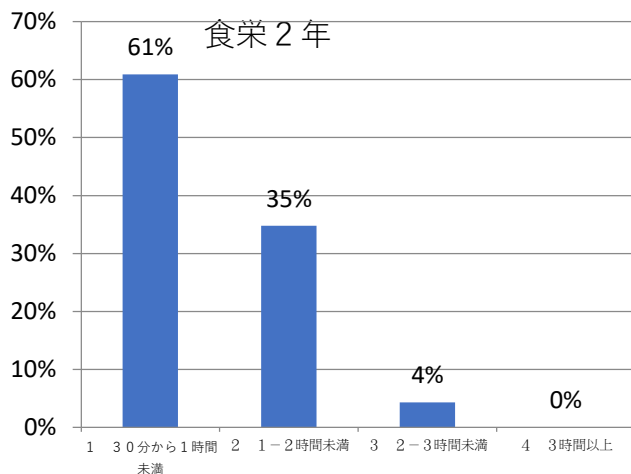
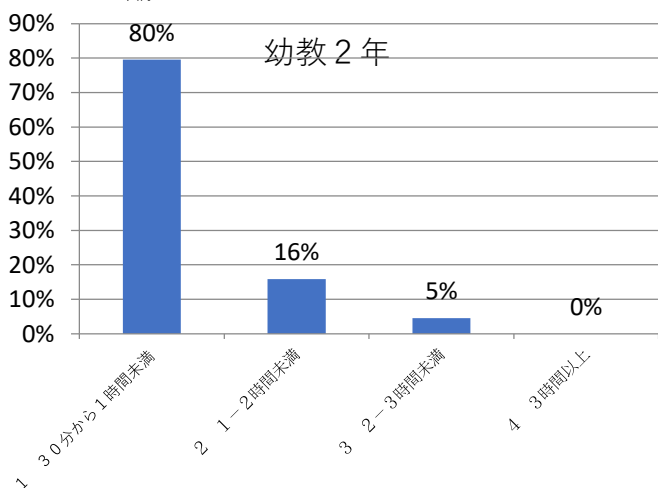
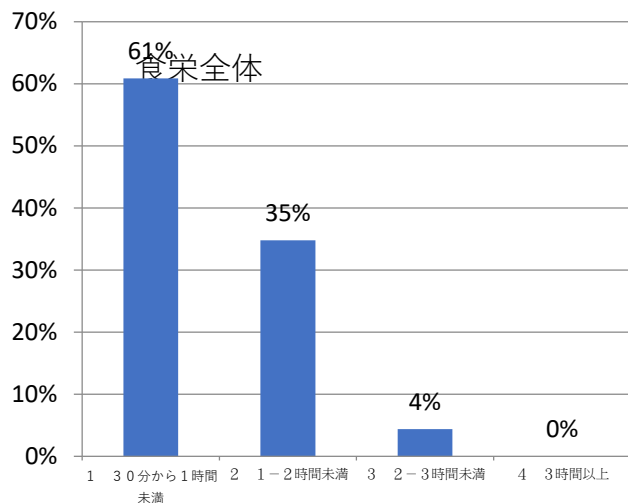
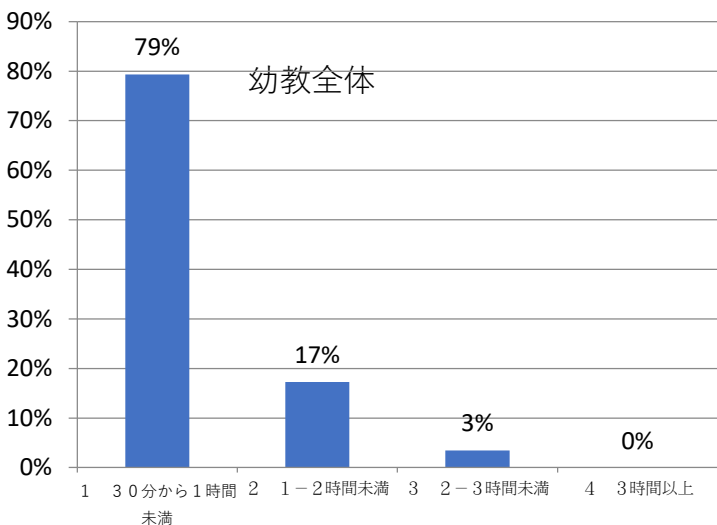
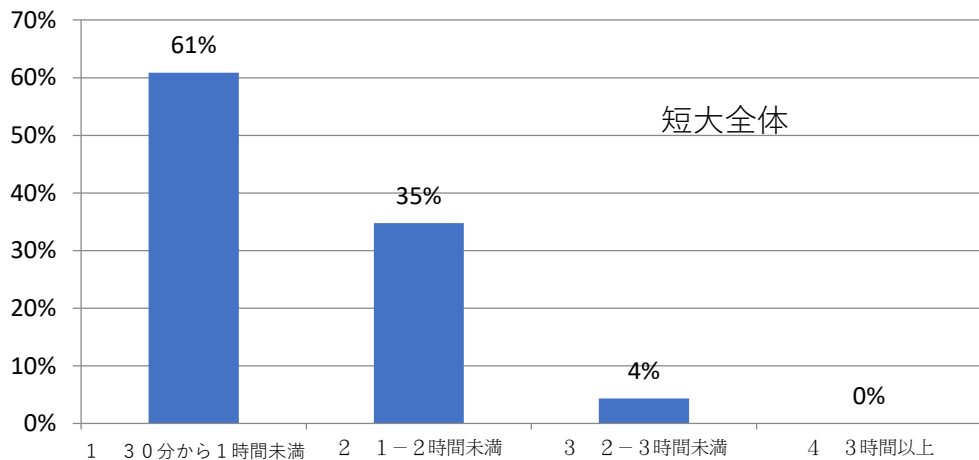
1. 徒歩
2. JR
3. バス
4. 自動車
5. 自転車
6. バイク
7. その他



質問3 通学時間は？

選択肢

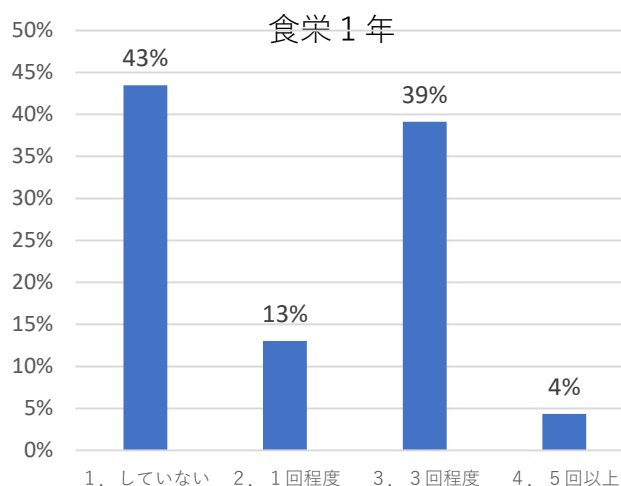
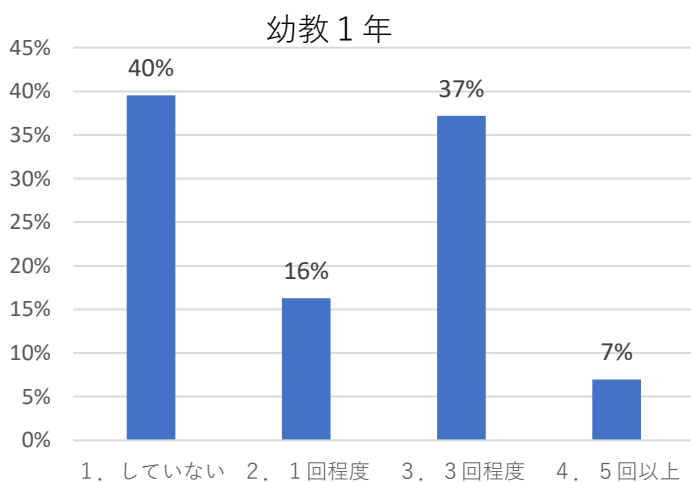
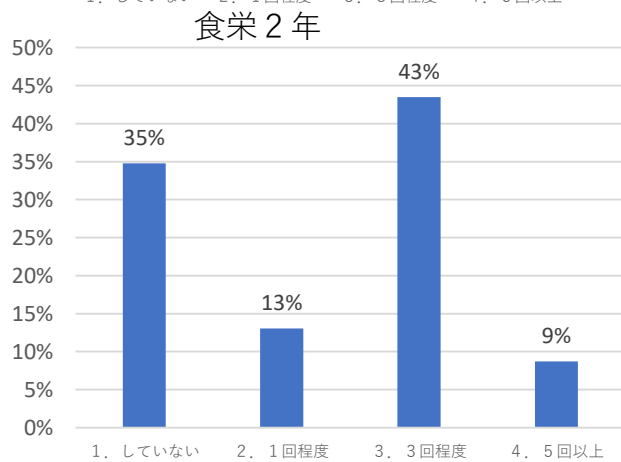
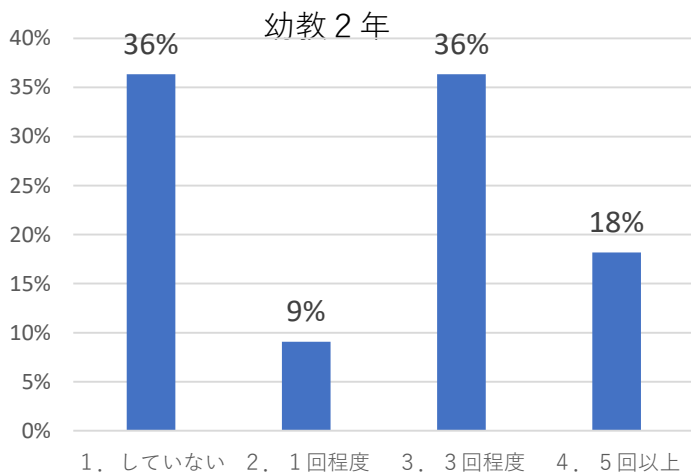
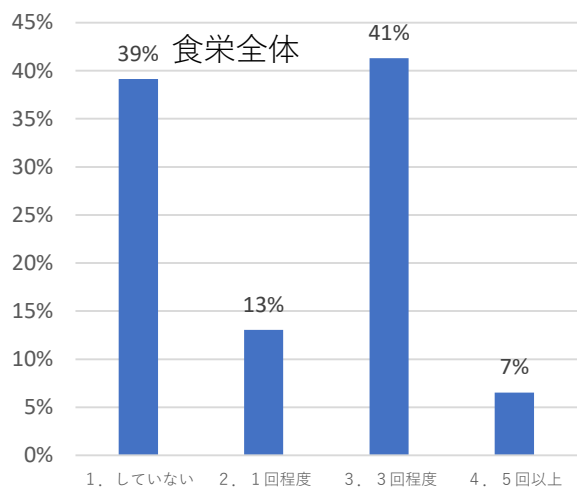
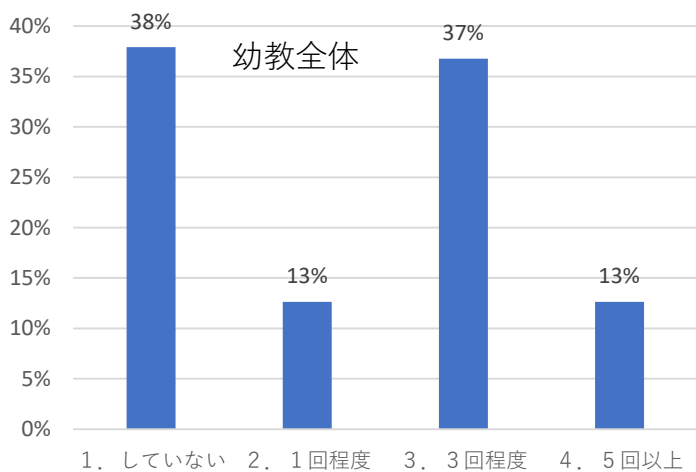
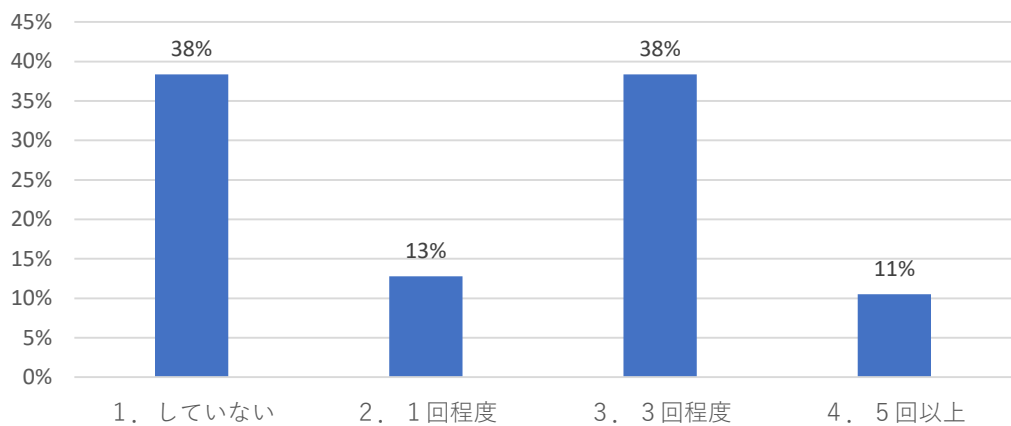
- 1 30分から1時間未満
- 2 1-2時間未満
- 3 2-3時間未満
- 4 3時間以上



質問4 アルバイトの頻度は？

- 1 アルバイトはしていない
- 2 週に1回程度
- 3 週に3回程度
- 4 週に5回以上

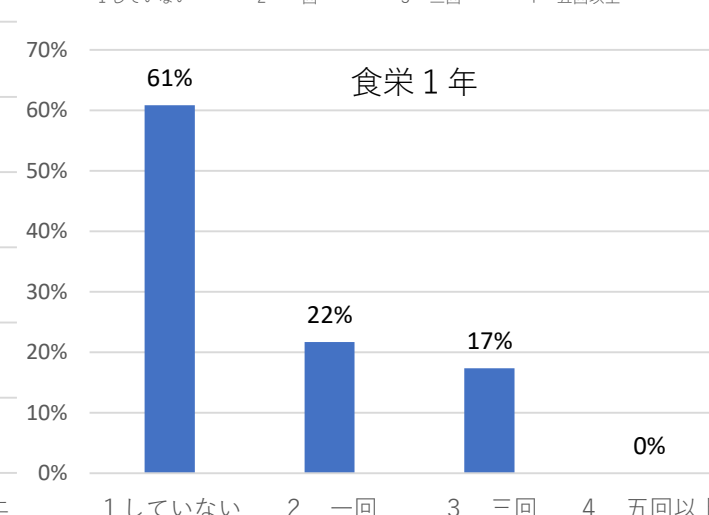
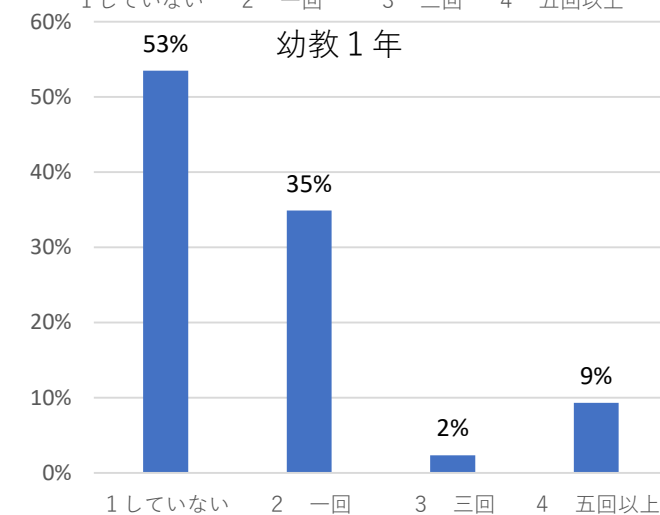
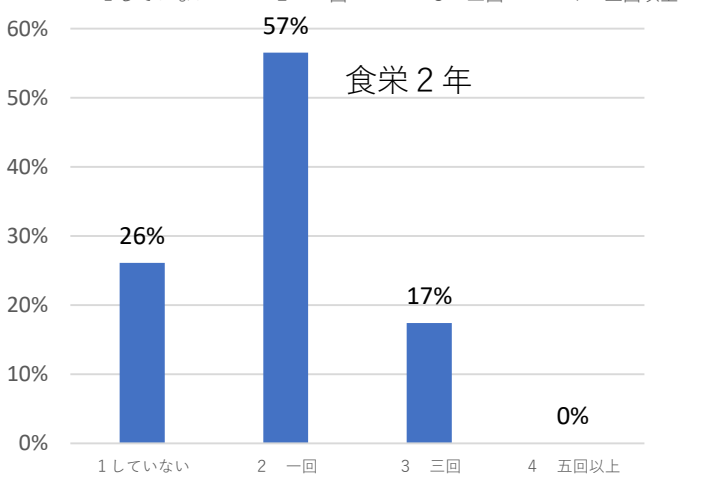
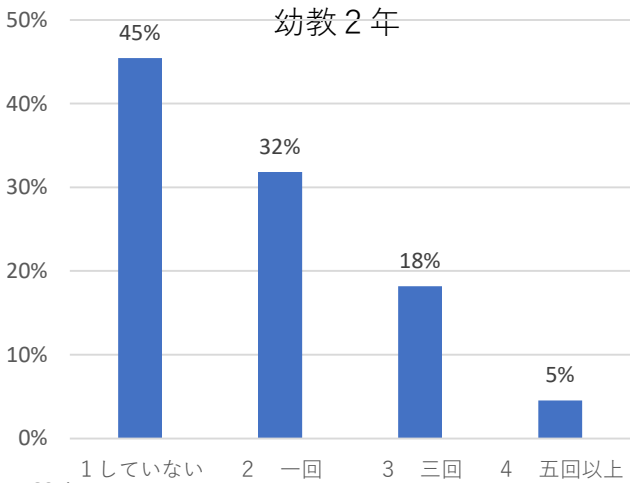
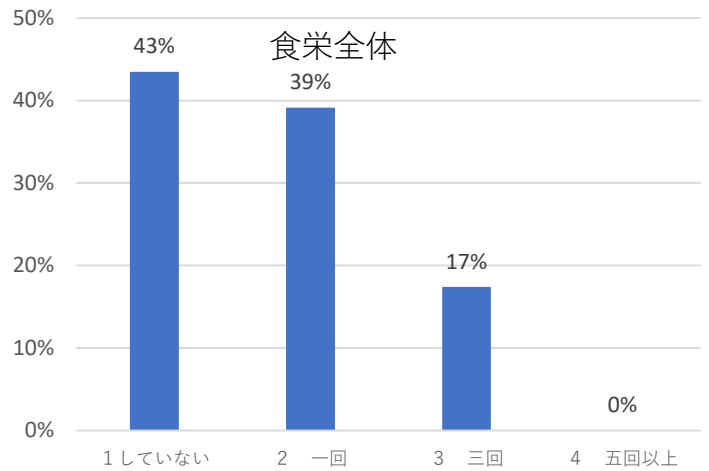
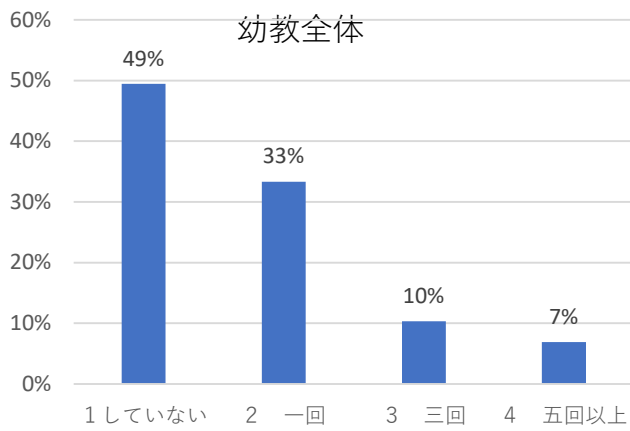
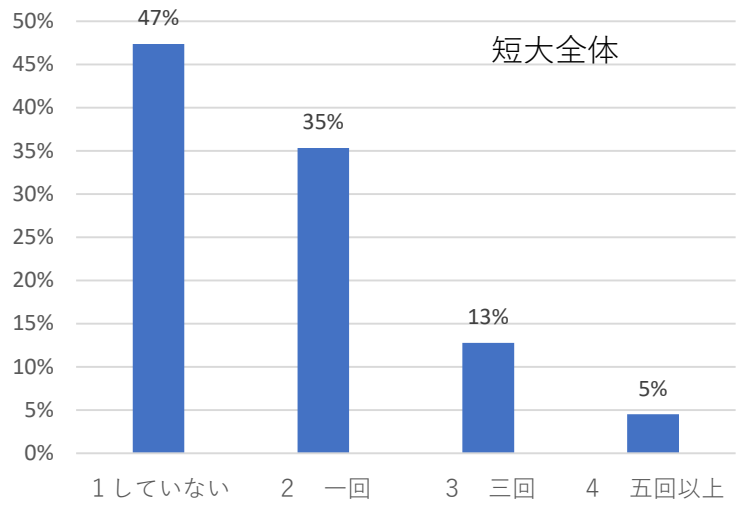
短大全体



質問5 ボランティアは？

選択肢

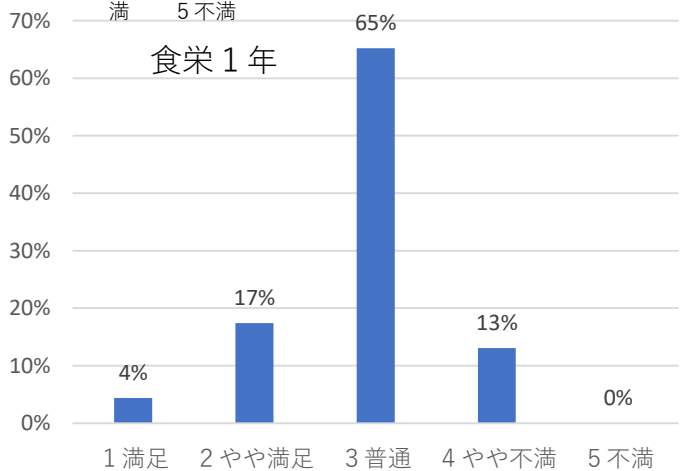
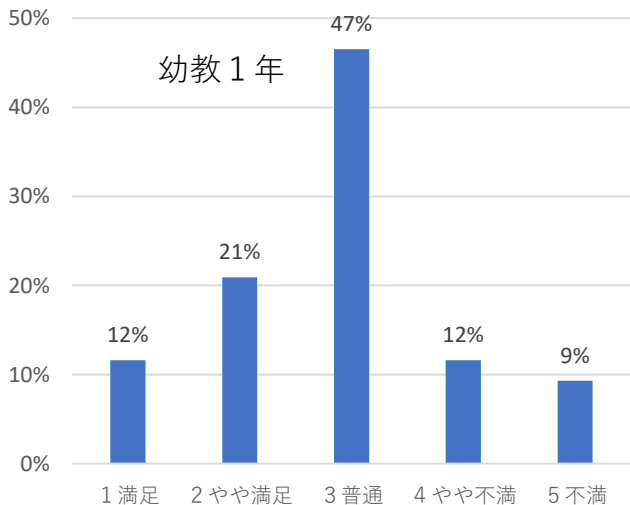
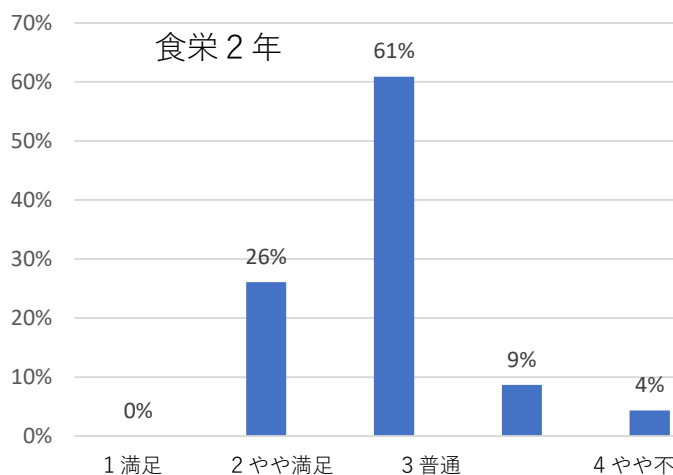
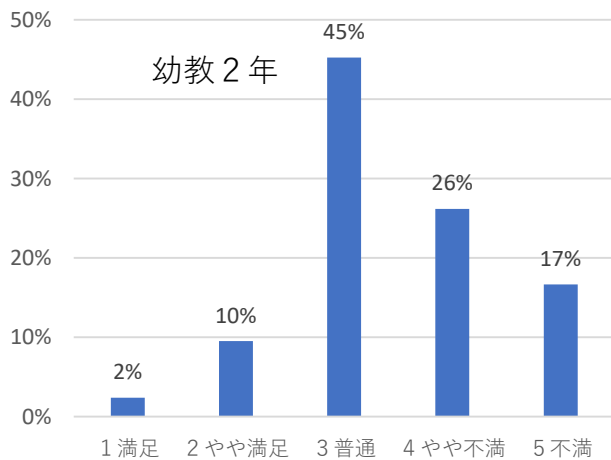
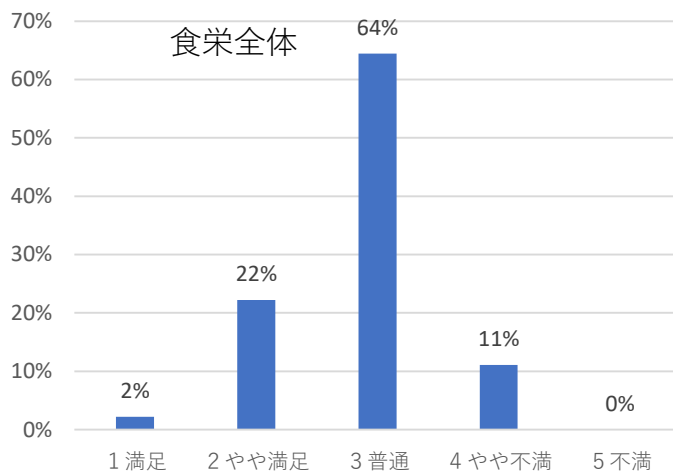
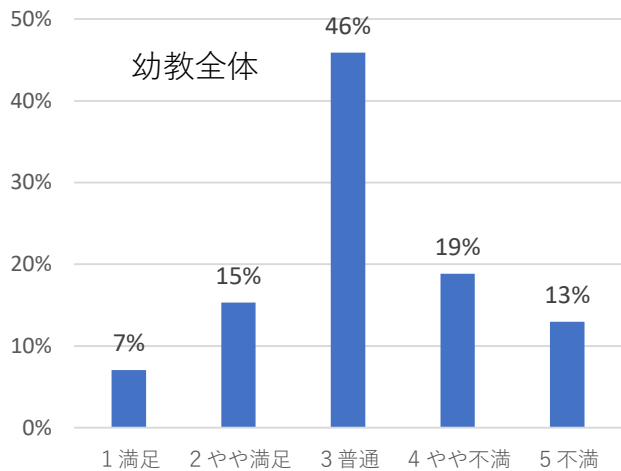
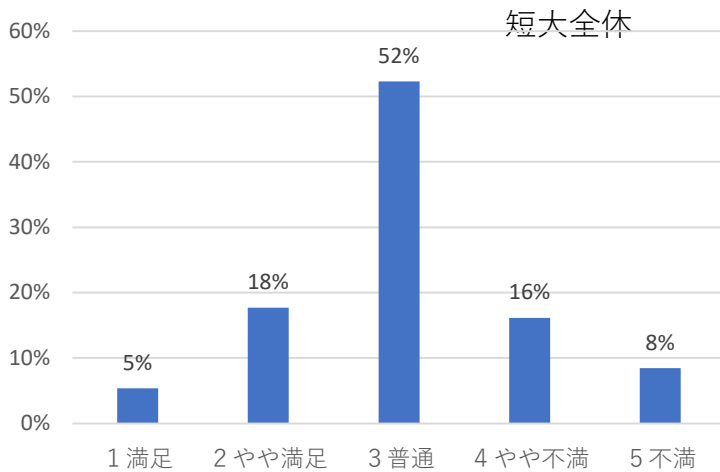
- 1 参加していない
- 2 一回参加した
- 3 三回参加した
- 4 五回以上参加した



質問6 学生生活の満足度は？

選択肢

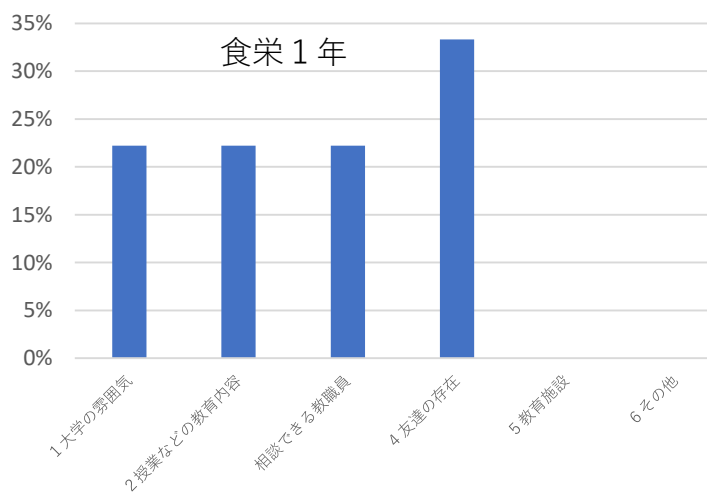
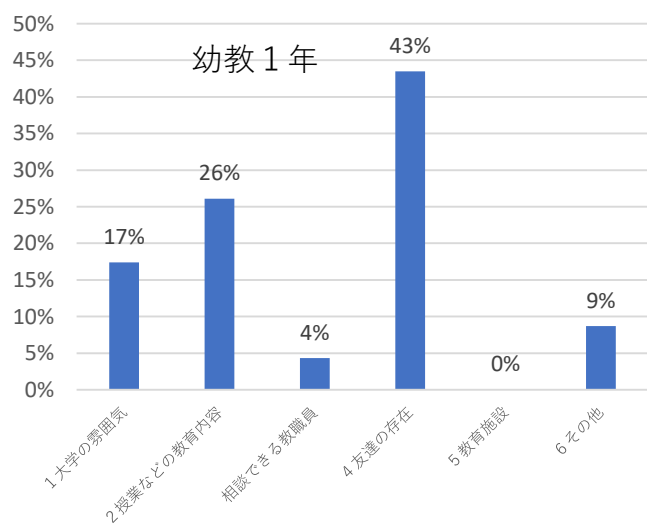
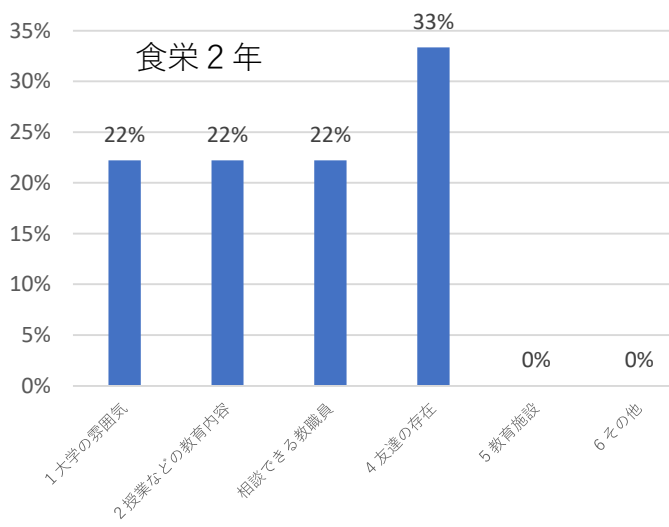
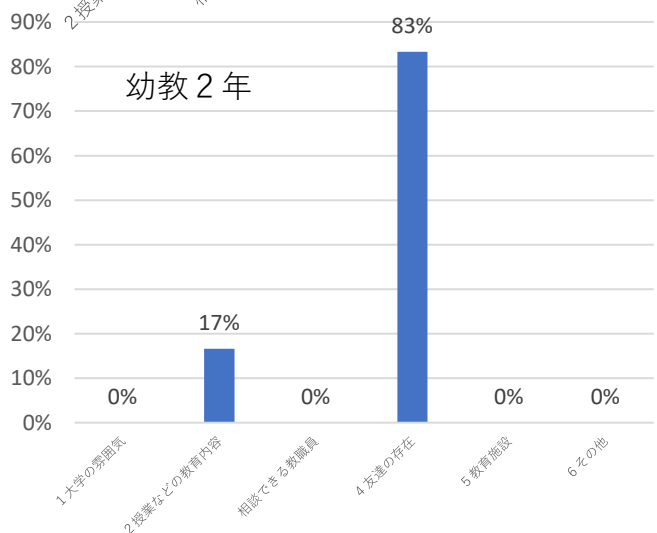
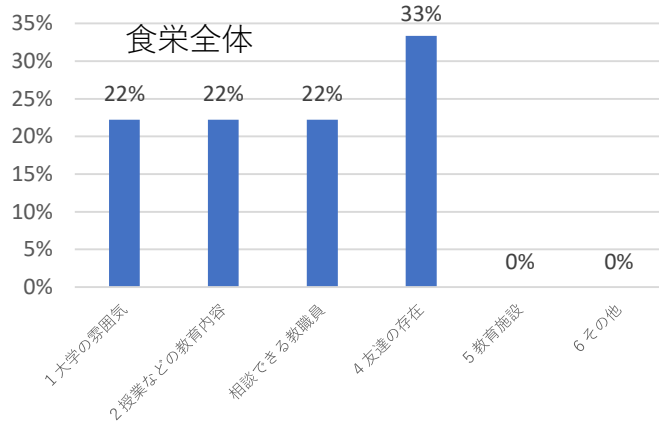
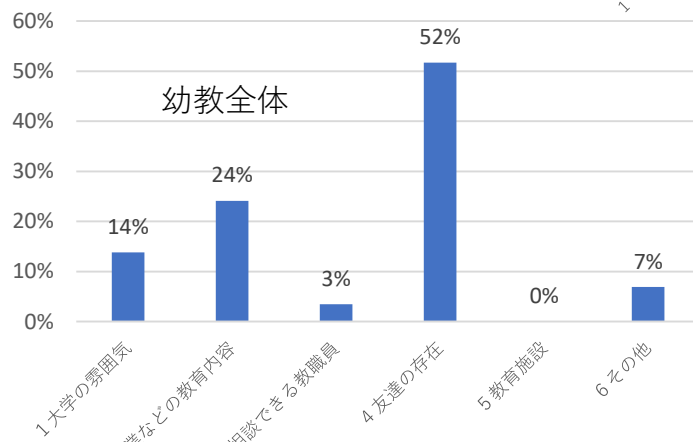
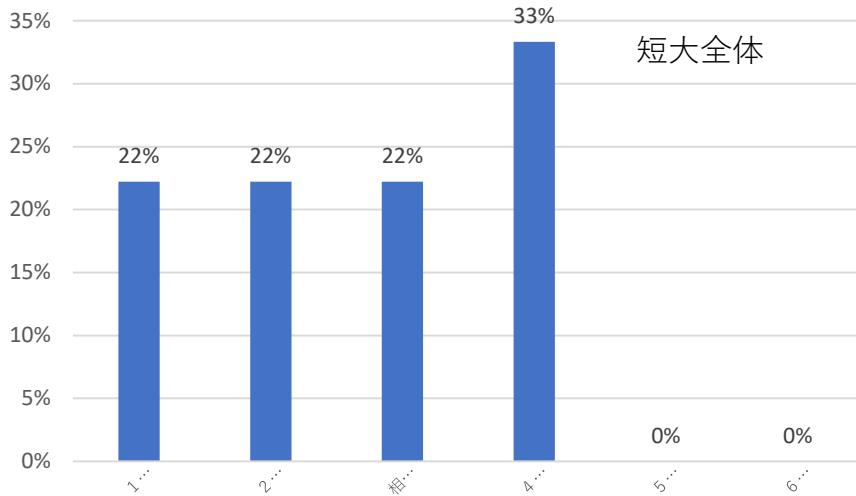
- 1 満足
- 2 やや満足
- 3 普通
- 4 やや不満
- 5 不満



質問7 満足な点は？

選択肢

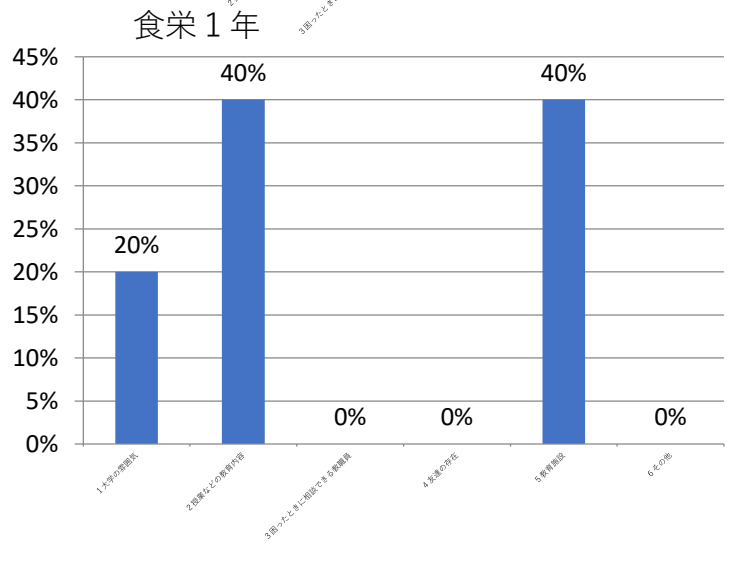
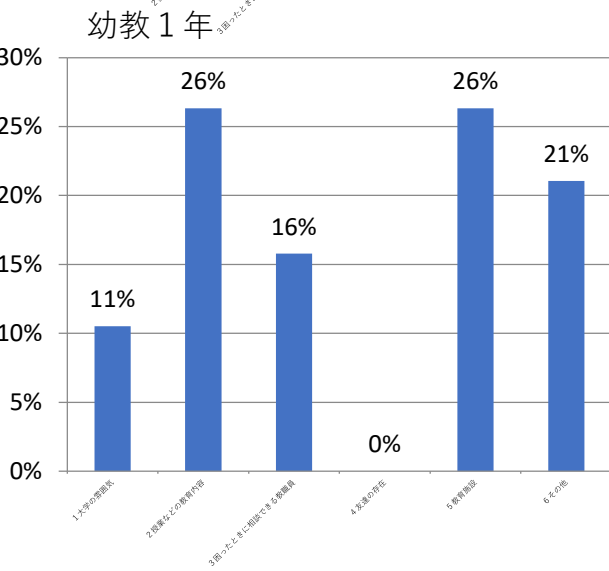
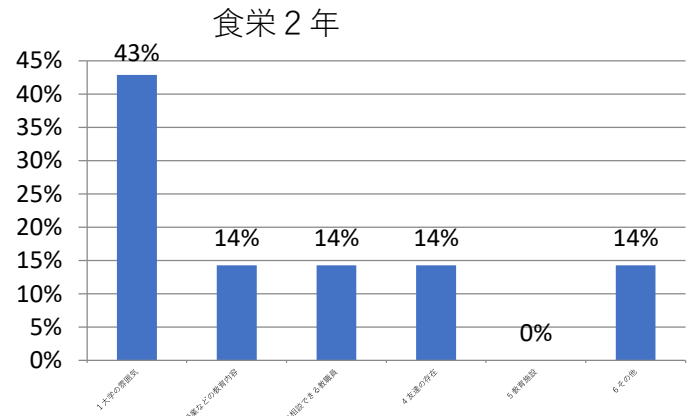
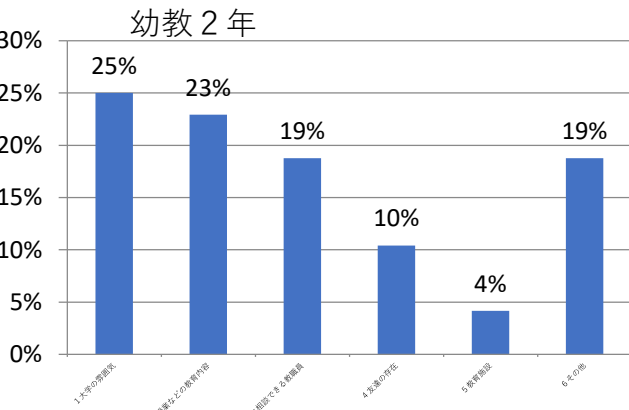
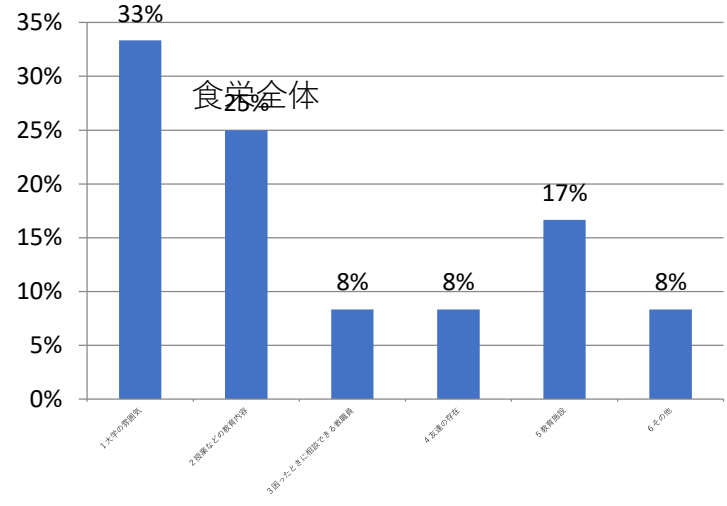
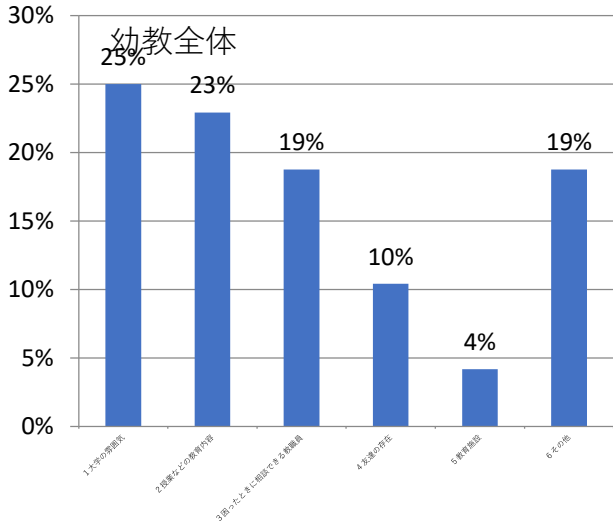
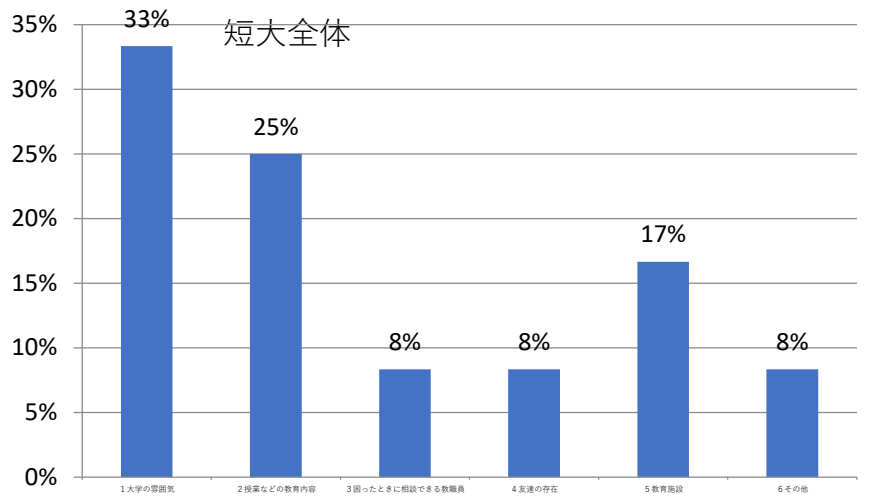
- 1 大学の雰囲気
- 2 授業などの教育内容
- 3 困ったときに相談できる教職員
- 4 友達 existence
- 5 教育施設
- 6 その他



質問 8 大学への不満は？

選択肢

- 1 大学の雰囲気
- 2 授業などの教育内容
- 3 困ったときに相談できる教職員
- 4 友達の存在
- 5 教育施設
- 6 その他

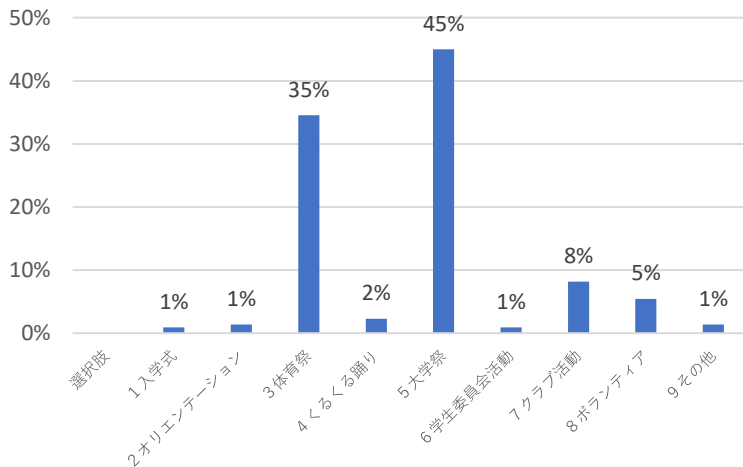


質問9 充実してほしい行事は？

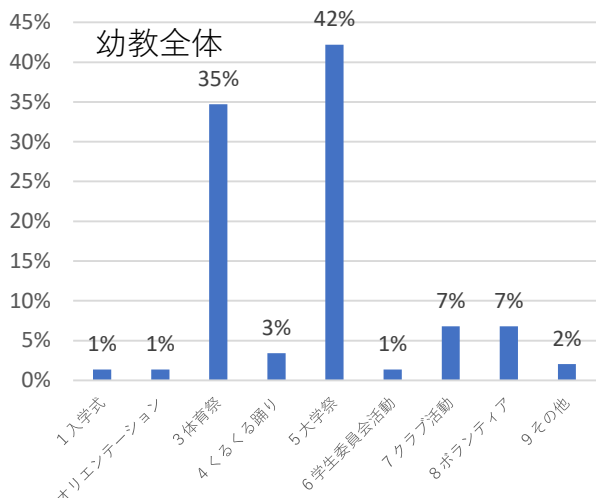
選択肢

- 1 入学式
- 2 オリエンテーション
- 3 体育祭
- 4 くるくる踊り
- 5 大学祭
- 6 学生委員会活動
- 7 クラブ活動
- 8 ボランティア
- 9 その他

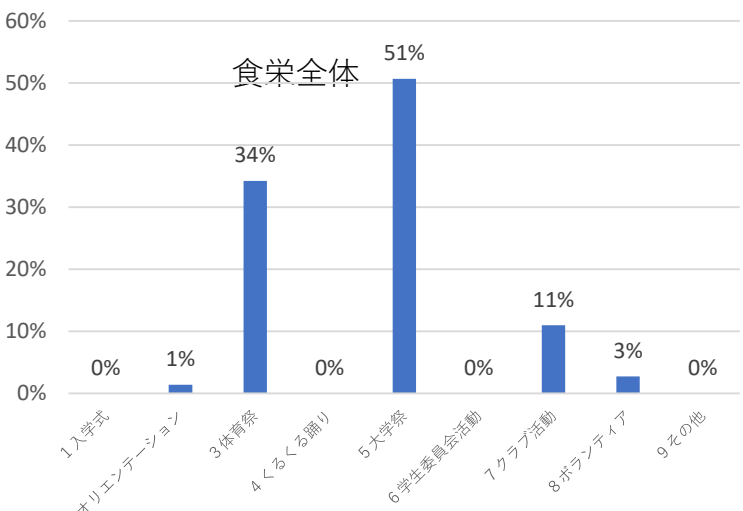
短大全体



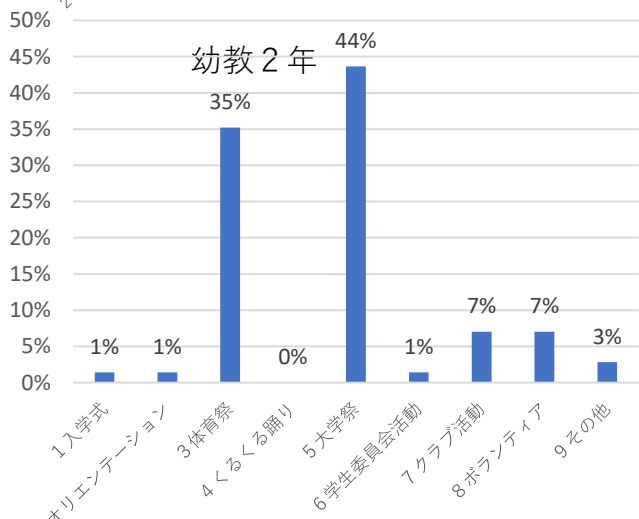
幼教全体



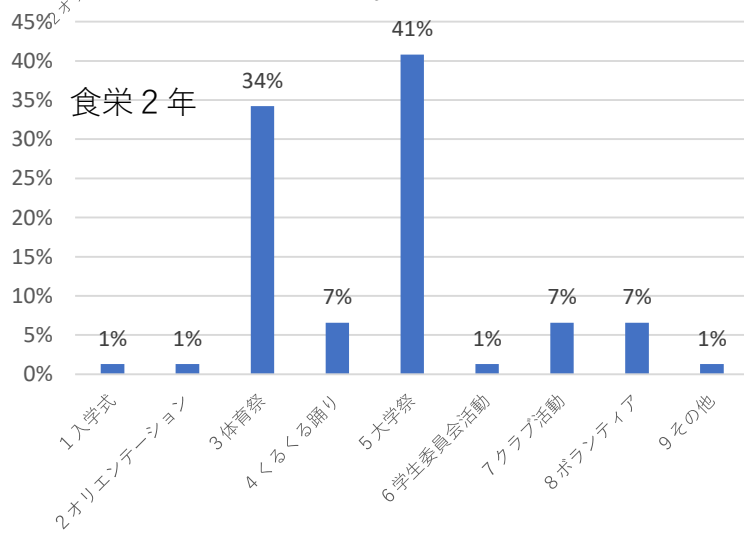
食栄全体



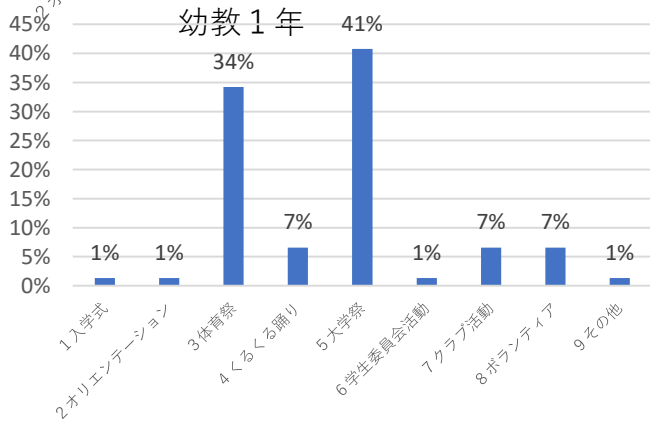
幼教2年



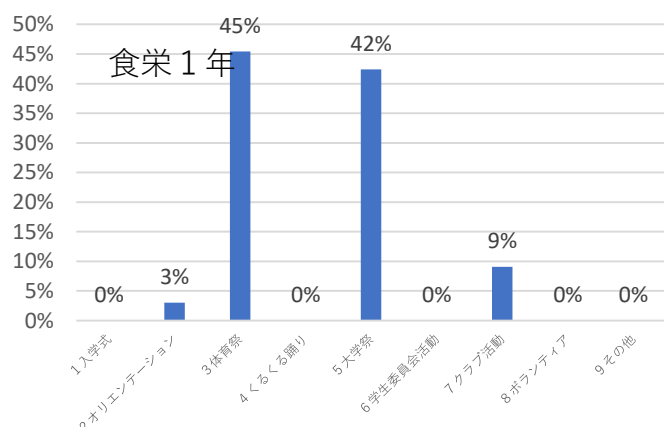
食栄2年



幼教1年

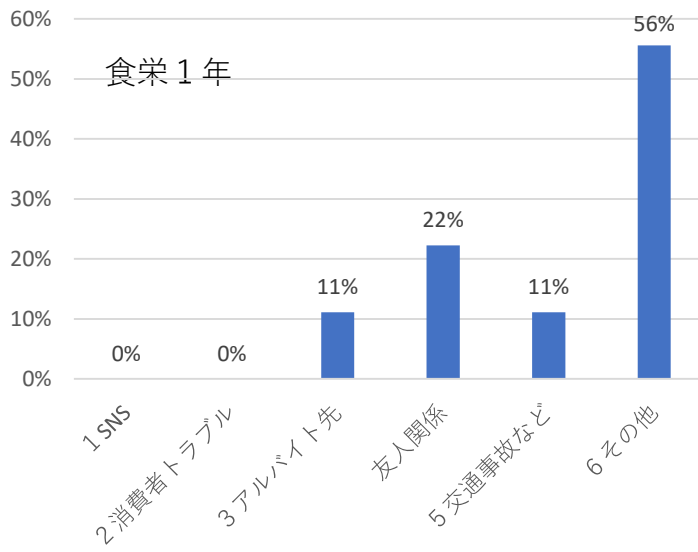
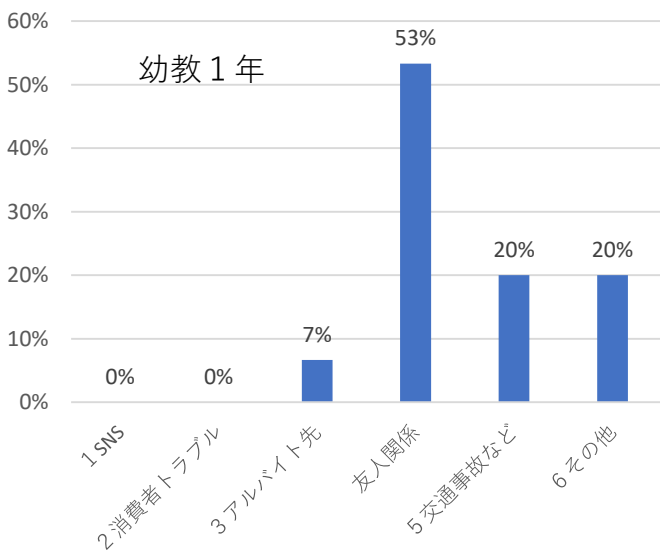
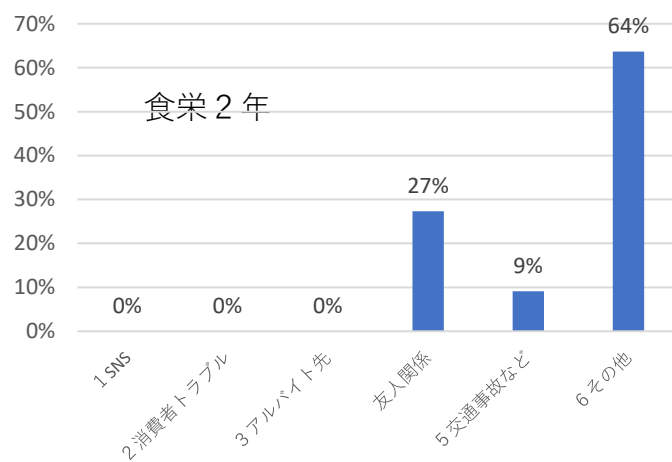
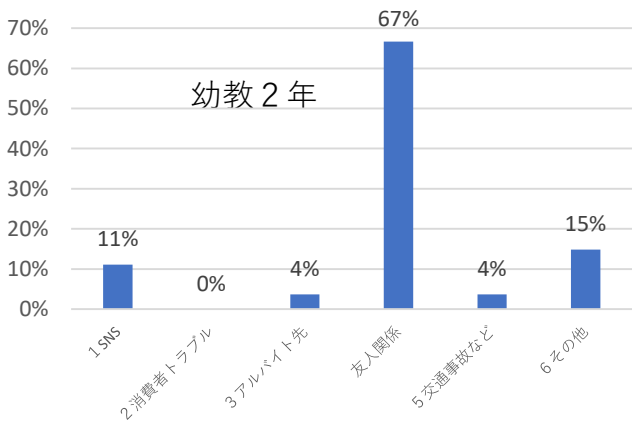
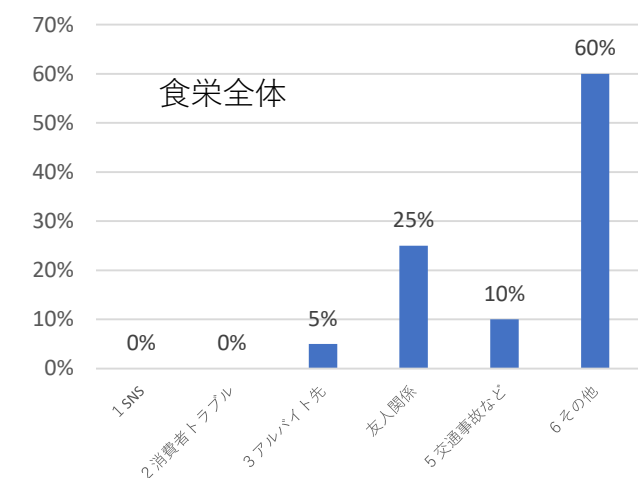
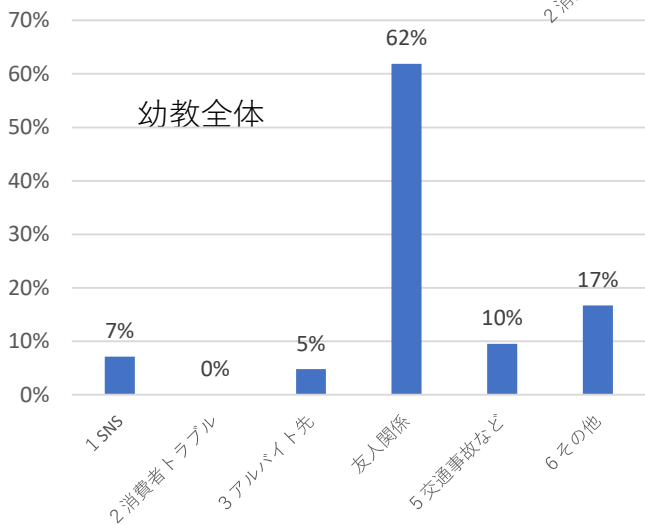
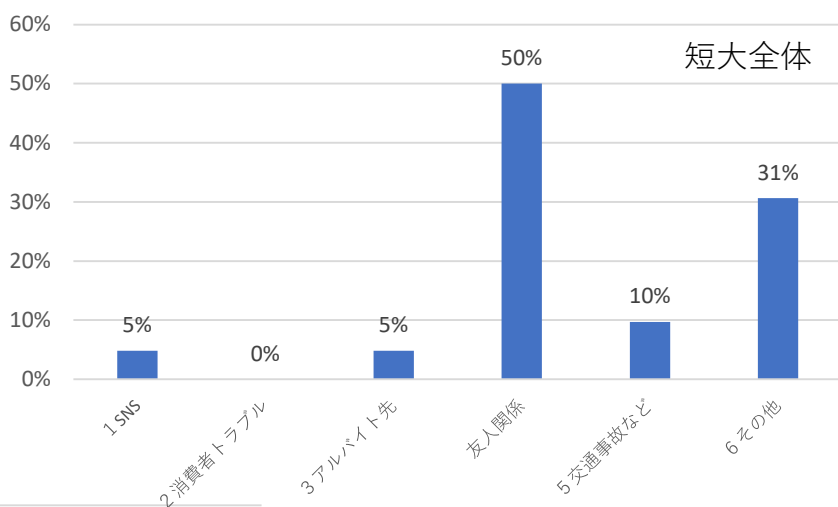


食栄1年



質問10 在学中のトラブルは？

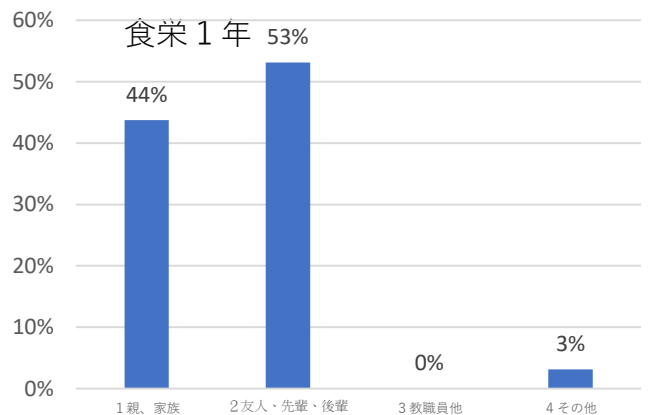
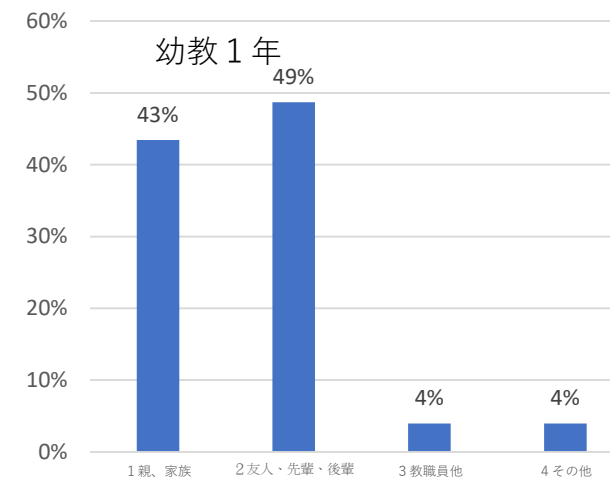
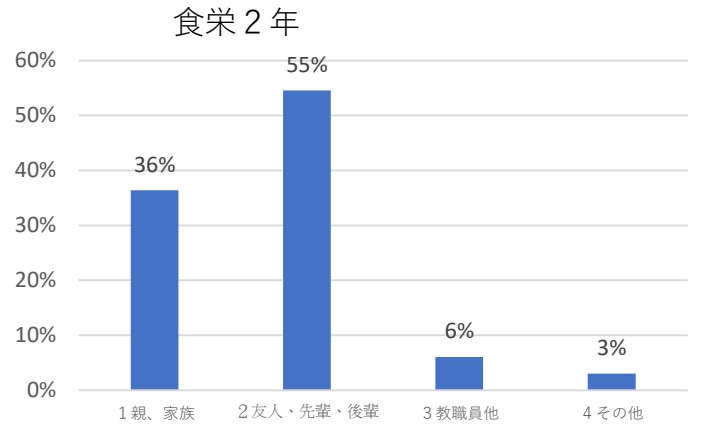
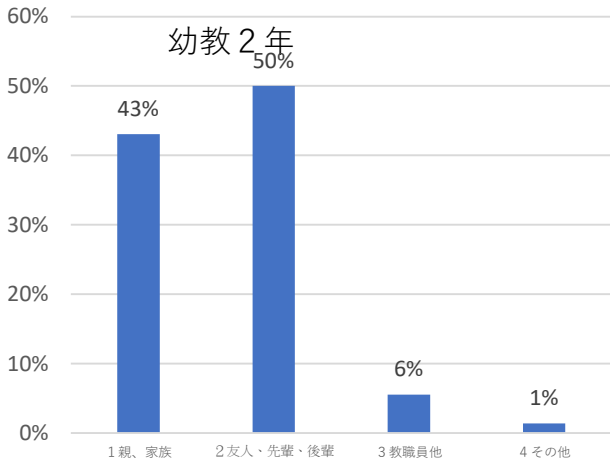
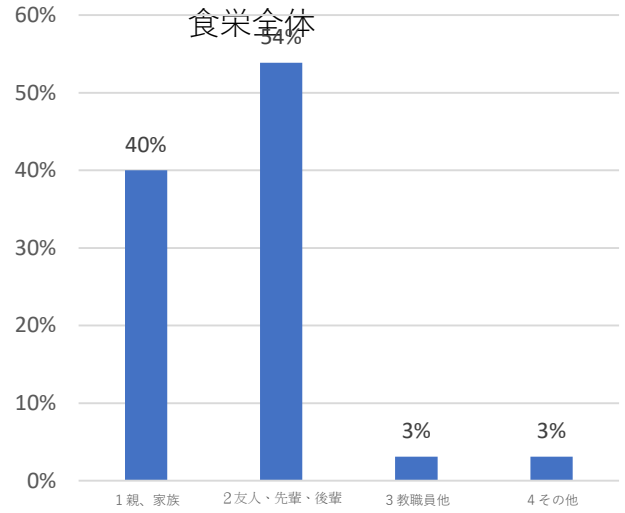
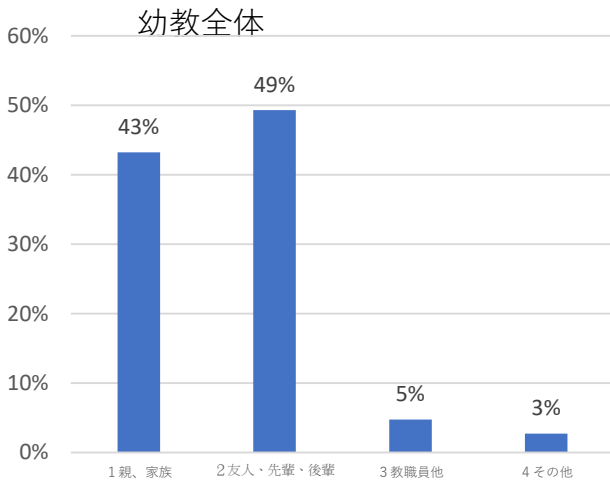
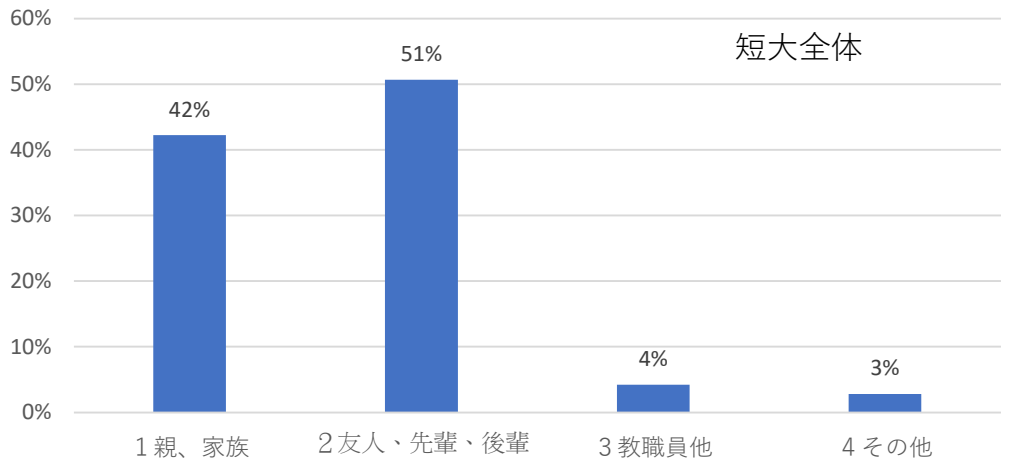
- 1 SNS
- 2 消費者トラブル
- 3 アルバイト先
- 友人関係
- 5 交通事故など
- 6 その他



質問 1 1 相談できる人は？

選択肢

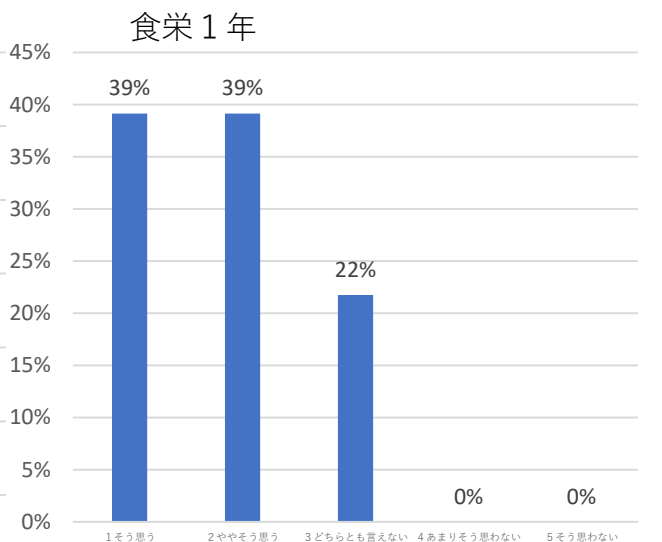
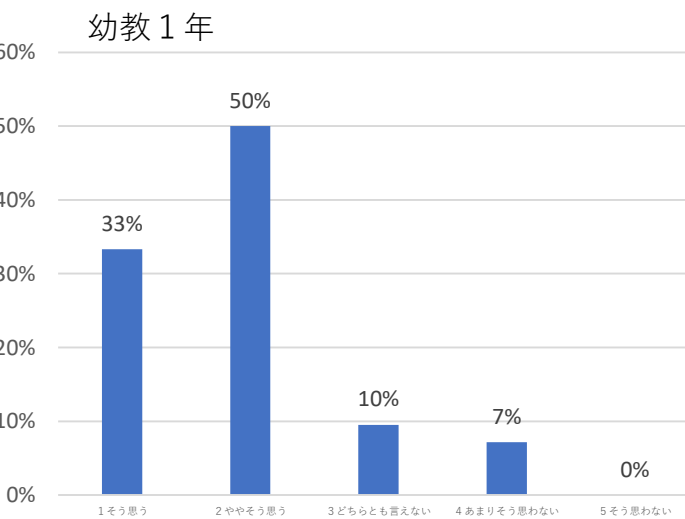
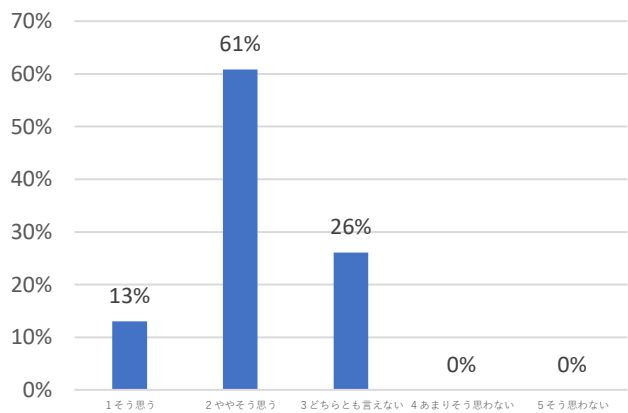
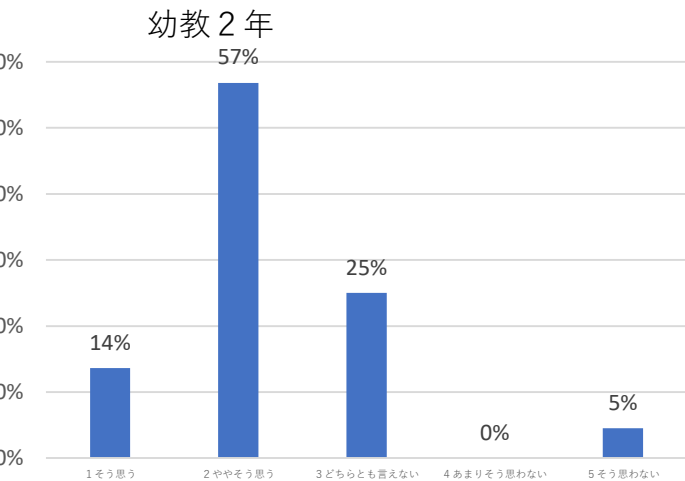
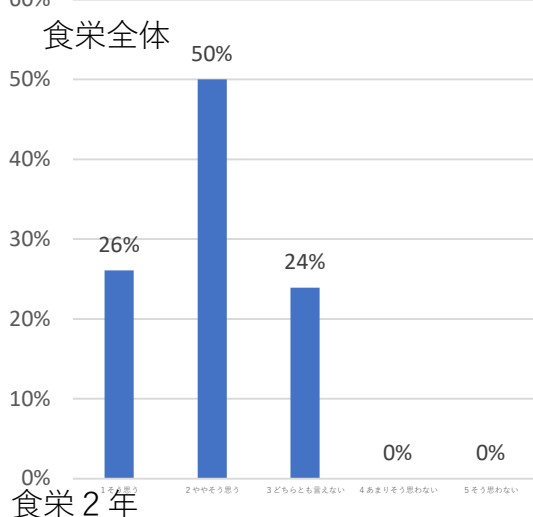
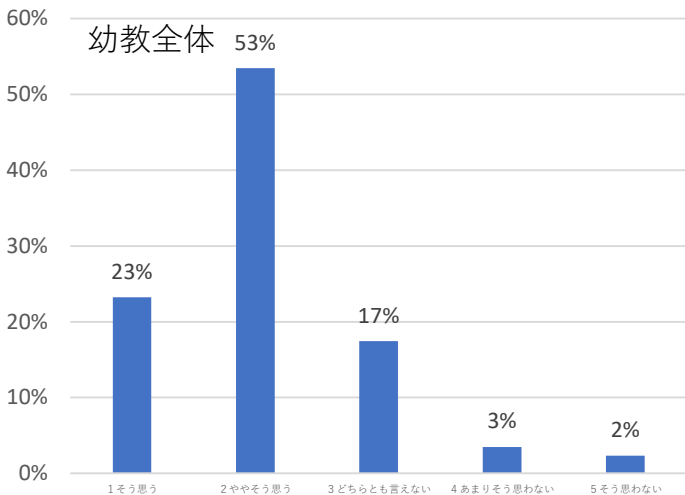
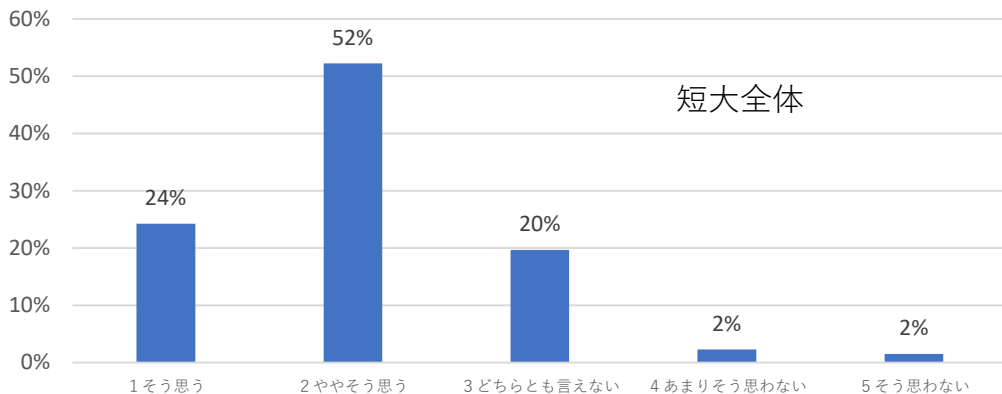
- 1 親、家族
- 2 友人、先輩、後輩
- 3 教職員他
- 4 その他



質問 1 2 授業を意欲的に受けたか？

選択肢

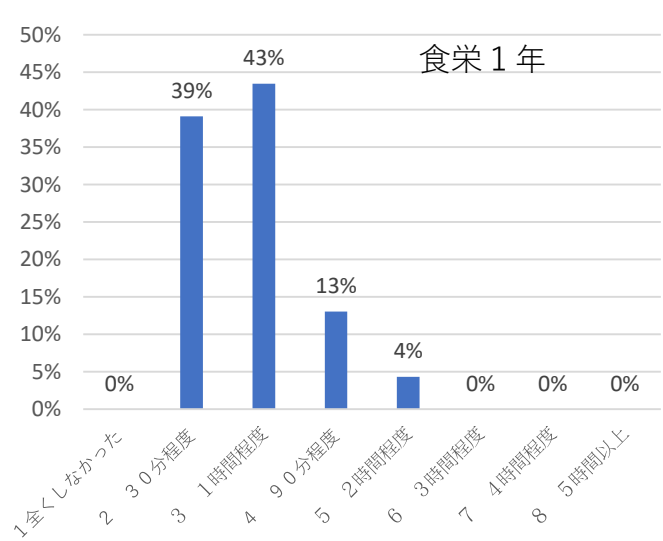
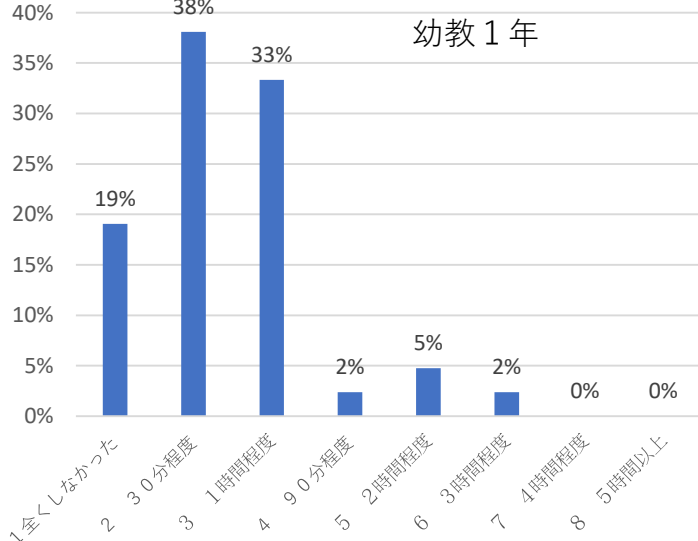
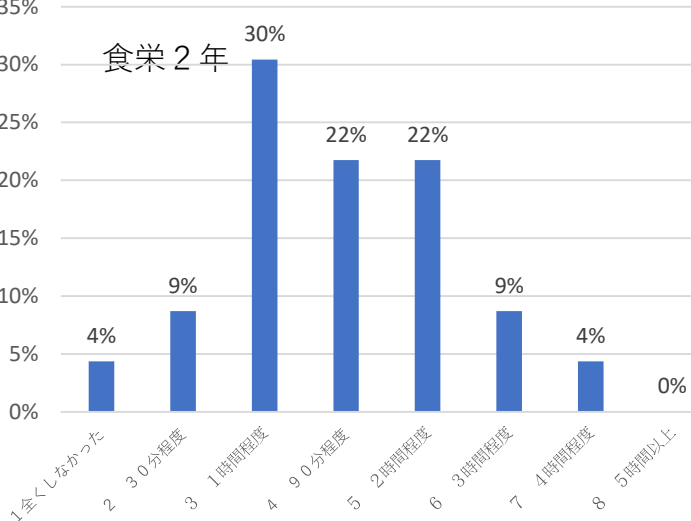
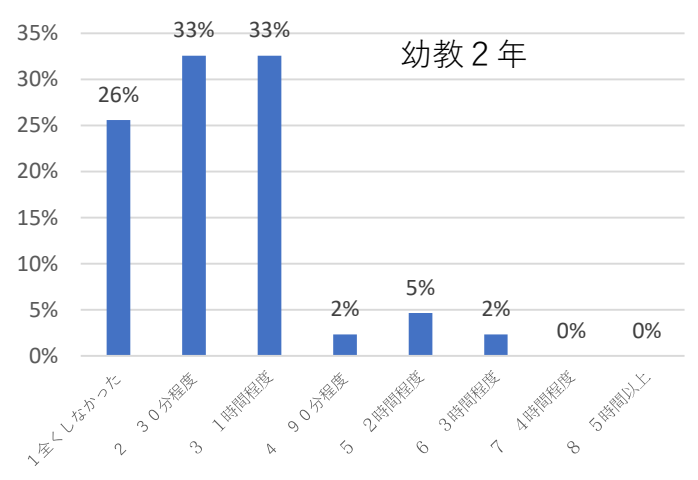
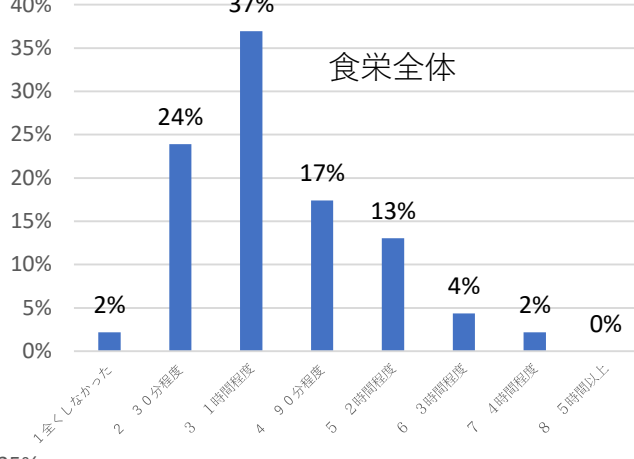
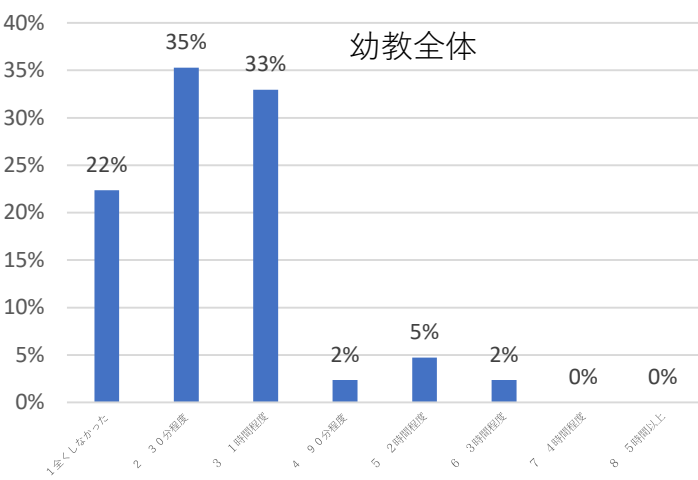
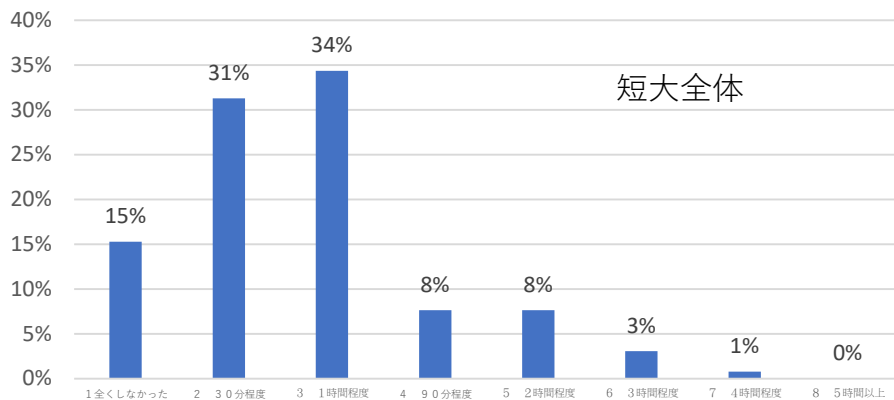
- 1 そう思う
- 2 ややそう思う
- 3 どちらとも言えない
- 4 あまりそう思わない
- 5 そう思わない



質問 1 3 勉強時間は？

選択肢

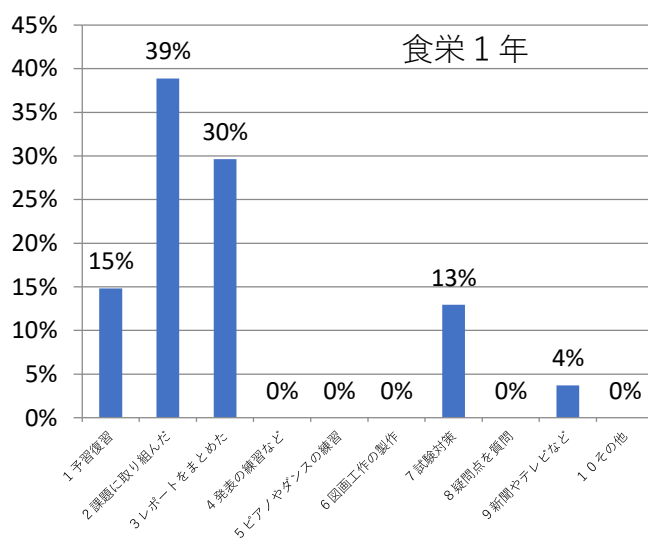
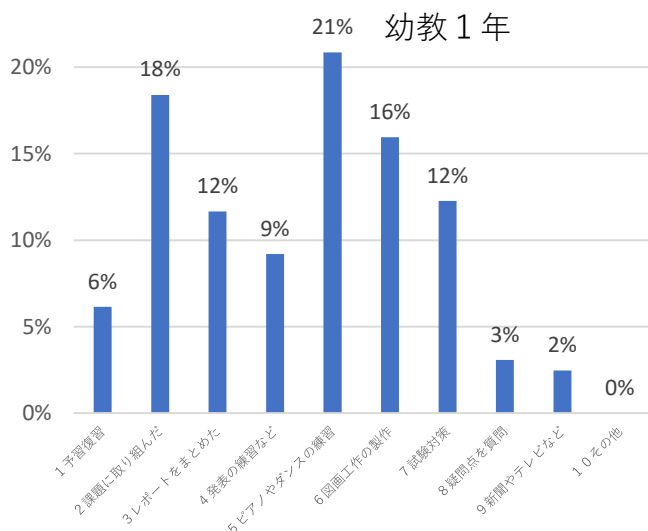
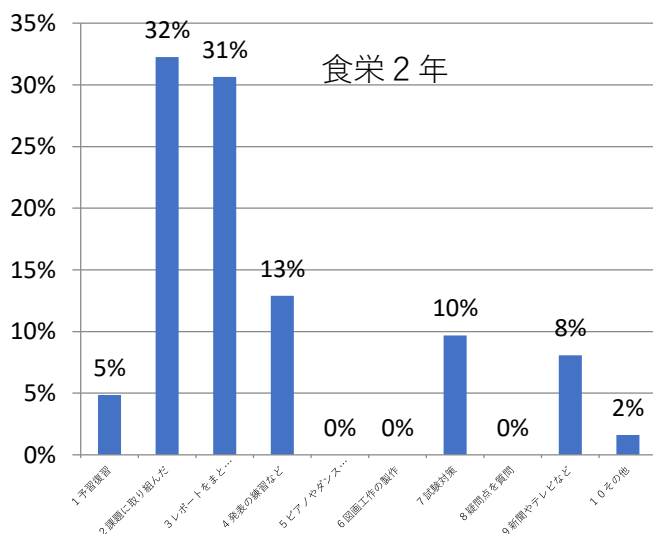
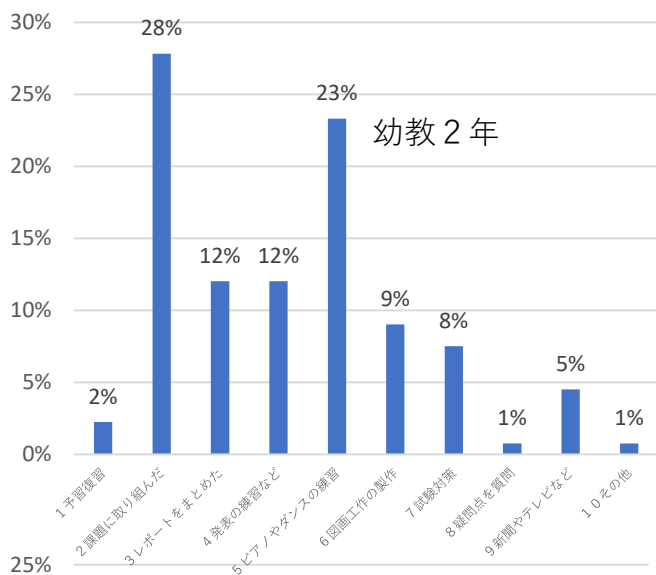
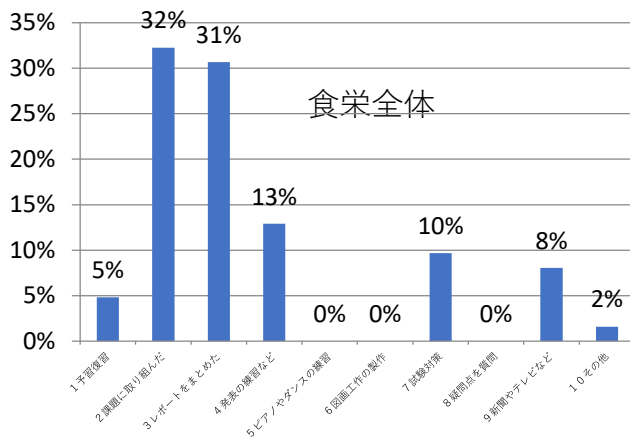
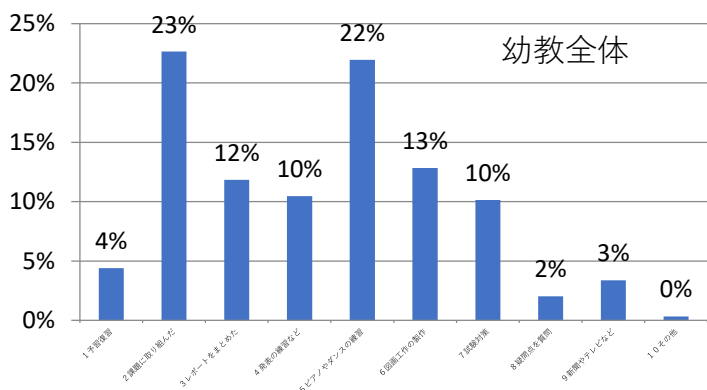
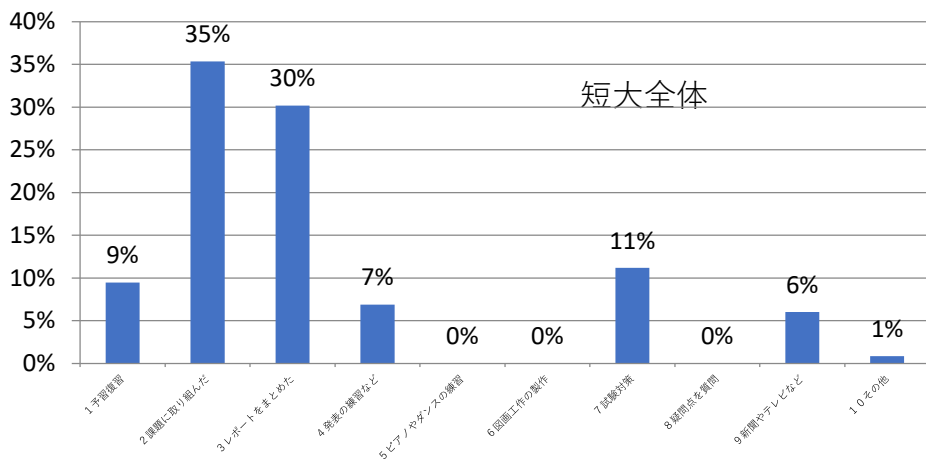
- 1 全くしなかった
- 2 30分程度
- 3 1時間程度
- 4 90分程度
- 5 2時間程度
- 6 3時間程度
- 7 4時間程度
- 8 5時間以上



質問 1 4 授業外の学習

選択肢

- 1 予習復習
- 2 課題に取り組んだ
- 3 レポートをまとめた
- 4 発表の練習など
- 5 ピアノやダンスの練習
- 6 図画工作の製作
- 7 試験対策
- 8 疑問点を質問
- 9 新聞やテレビなど
- 10 その他



質問 1 5 充実してほしい教育

選択肢

- 1 専門教育
- 2 教養教育
- 3 基礎学力
- 4 キャリア
- 5 資格
- 6 その他

